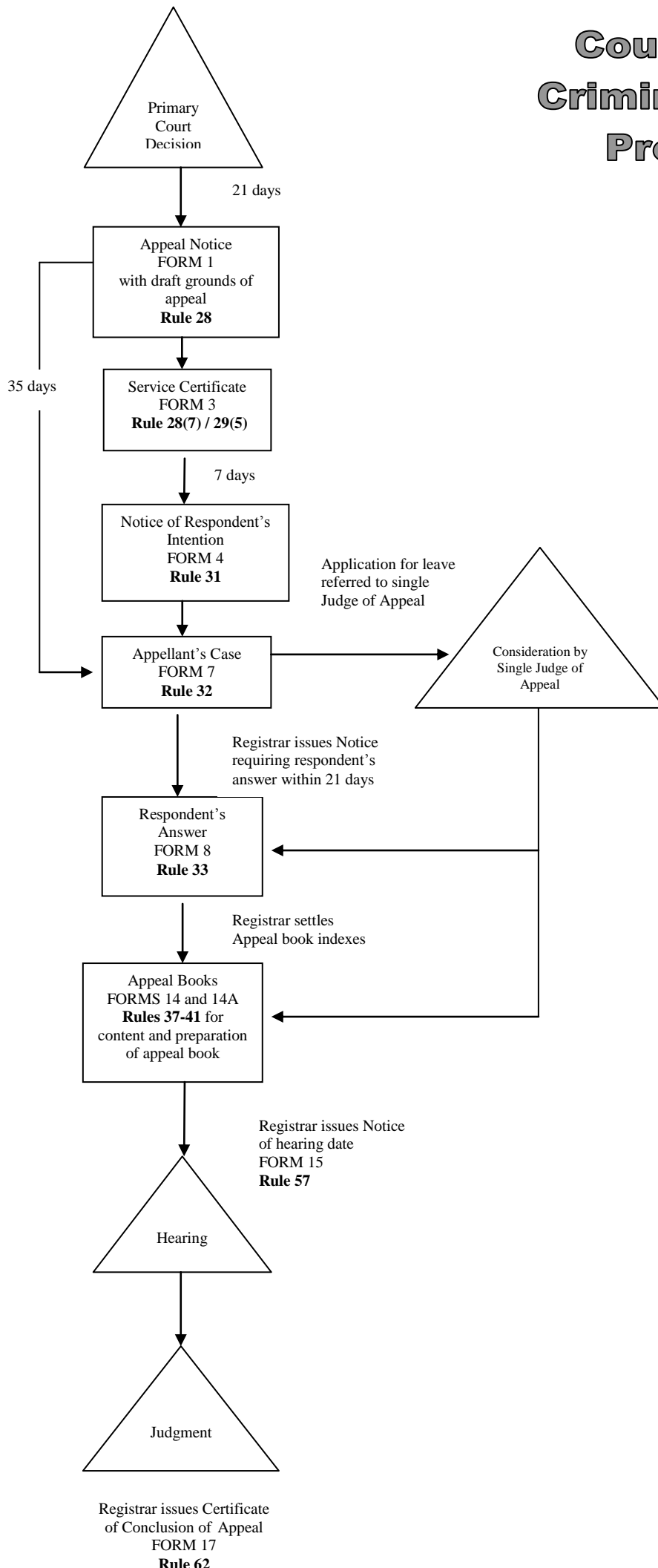


Court of Appeal Criminal Appellate Process Map



Single Judge of Appeal may:

- Refer the application for leave for determination by the COA;
- Grant or refuse the application for leave;
- Make programming orders;
- Review the matter at a later date;
- List the matter for mention at a later date; or
- Make such orders as the Judge deems necessary.

The single judge of appeal may make orders on the papers..